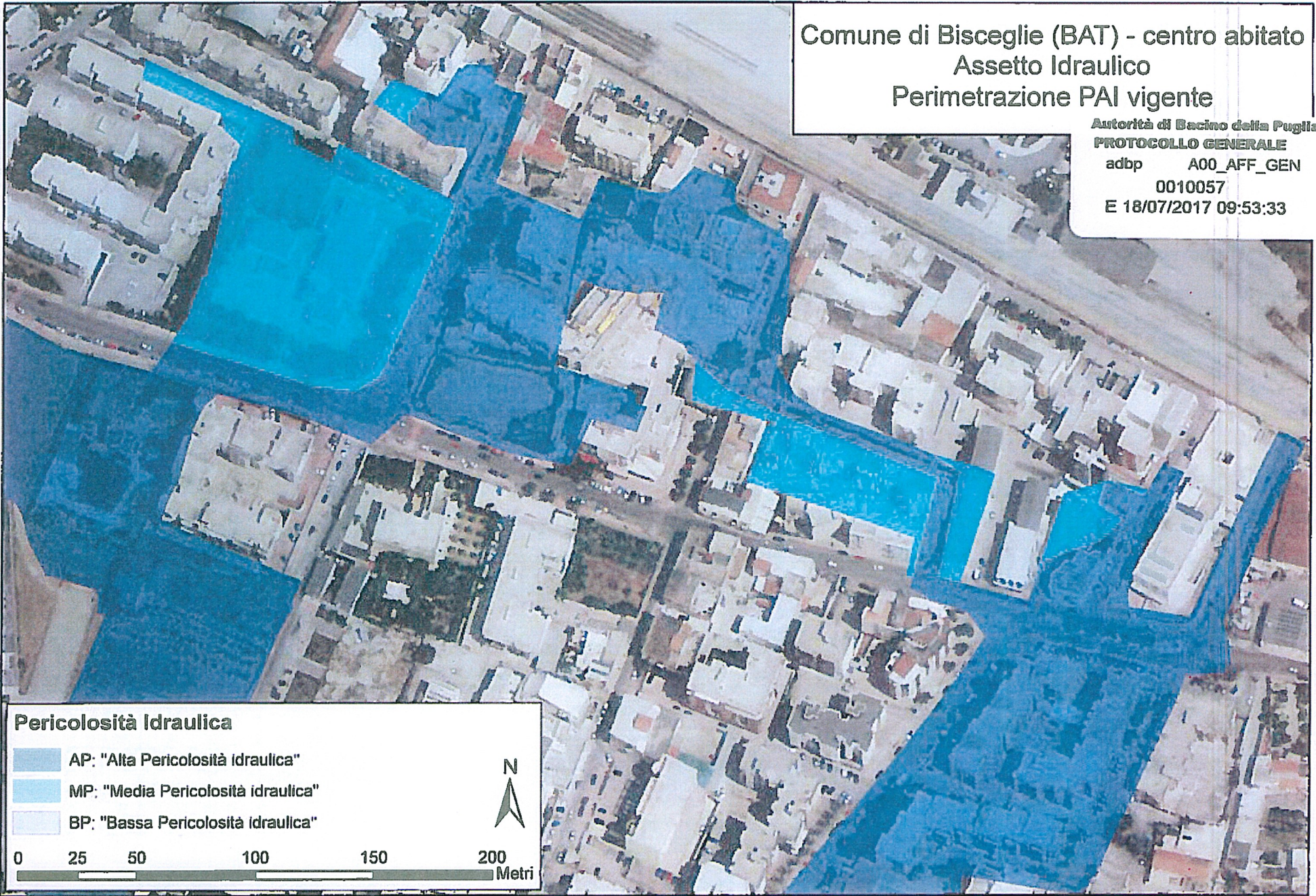


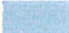
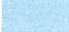

12/11

Comune di Bisceglie (BAT) - centro abitato
Assetto Idraulico
Perimetrazione PAI vigente

Autorità di Bacino della Puglia
PROTOCOLLO GENERALE
adbp A00_AFF_GEN
0010057
E 18/07/2017 09:53:33



Pericolosità Idraulica

-  AP: "Alta Pericolosità idraulica"
-  MP: "Media Pericolosità idraulica"
-  BP: "Bassa Pericolosità idraulica"



0 25 50 100 150 200
Metri